

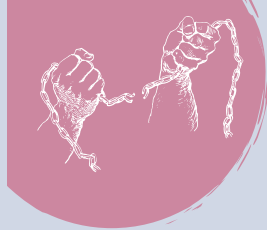


PROJECT'S OVERVIEW



The project aims to ensure and strengthen the protection and assistance network for 1500 women who have become involved in the migration cycle from Lebanon through to their return to Ethiopia and other countries of origin.

CELIM helps strengthen the means of protection of migrant women's human rights and improve the management of migratory flows.



VICTIMS OF THE KAFALA SYSTEM

Every year thousands of **migrant domestic workers**, more than half of which Ethiopians, come to Lebanon with the hope of finding a better future.

As soon as they cross the border, they remain stuck in the **kafala system**: they become prisoners and slaves of their employer, who guarantees the legality of their stay in front of the State.

Their documents are seized, they are often **victims of abuse and violence**, in many cases they are not paid and they are obliged into forced labour, with no rights. Some of them manage to escape and find a place of refuge in shelters, the centres for migrant women workers.



CELIM

SWMC SECURING
WOMEN
MIGRATION
CYCLE

Guaranteeing human rights to migrant women workers in Lebanon and Ethiopia



LEBANON

- 1 Strengthening the reception, protection and repatriation services of the 3 shelters of **Olive, Pine/Oak** and **Laksetha**
- 2 Improving the hygiene/sanitary conditions of the **Adlieh** migrant detention centre
- 3 Providing psychological, medical and legal **assistance** until their repatriation

Strengthening the reception and reintegration facilities of the **Bet Selam shelter** for the repatriated migrant women

1

Starting work and social reintegration services for repatriated women and their families

2

Strengthening dialogue and awareness on migrants' protection targeting institutions, communities of origin and employers

3

ETHIOPIA



OUR PARTNERS



OUR DONOR



This project was funded by **AICS**
Italian Agency for Development Cooperation - Agenzia Italiana per la Cooperazione allo Sviluppo

OUR CONTACTS

celim@celimlb.org
<https://www.celim.it/en/>

PROJECT MANAGER:
 MARCO AURELIO BENEDETTI
 benedetti@celimlb.org
 +961 1 380 906



From April 2018 to December 2021



2210
 Daily services offered in the shelters in Lebanon



813
 Ethiopian migrants assisted in the repatriation



10080
 Targeted by preventive information in Ethiopia