

REINTEGRATION HANDBOOK: Practical guidance on the design, implementation and monitoring of reintegration assistance

WHAT IS THE REINTEGRATION HANDBOOK ABOUT?

The [Reintegration Handbook](#) provides practical guidance for designing, implementing, monitoring and evaluating reintegration assistance programmes.

Reintegration can take place in various return contexts, for example following spontaneous, forced or assisted voluntary returns or internal displacement. The Handbook focuses on assistance, in the context of migration management, provided to migrants who are unable or unwilling to remain in host countries.

The Handbook is written on the premise that the goal of reintegration assistance is to foster the sustainable reintegration of returnees and that this requires a government-wide approach. In practice, this occurs through the adoption of coordinated policies and in harmonization with practices by relevant stakeholders at the international, regional, national and local levels.






WHO IS THE REINTEGRATION HANDBOOK FOR?

The Handbook is a hands-on tool.

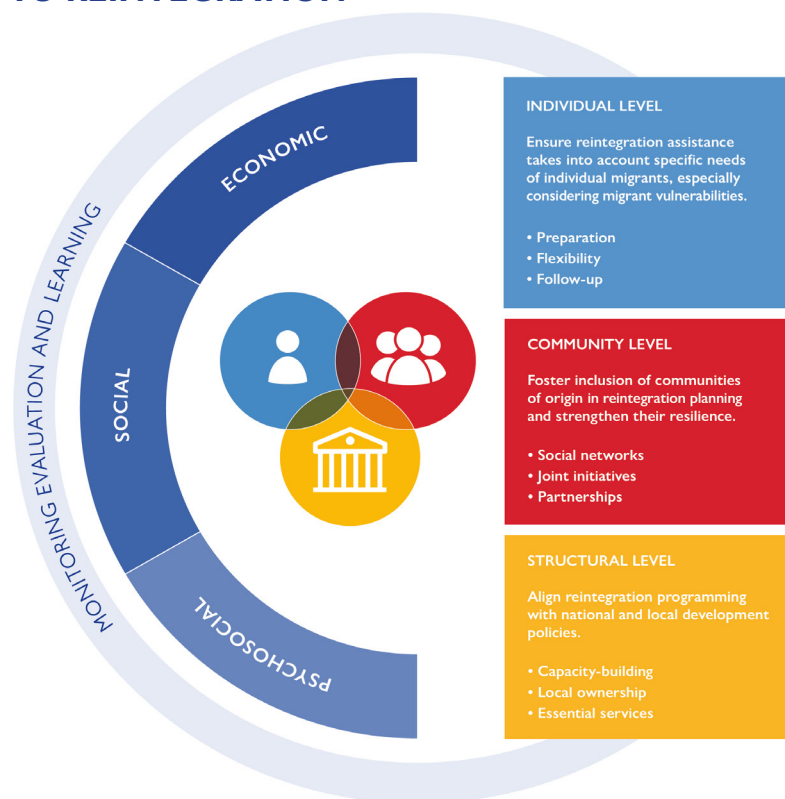
It is designed for various stakeholders involved in providing reintegration-related support at different levels and at different stages: project developers, project managers and case managers – but also policy makers and other reintegration practitioners.

While many actors might have an interest in all proposed modules, each module indicates the specific target audience for which it is aimed.

WHAT IS IN THE REINTEGRATION HANDBOOK?

 MODULE 1	 MODULE 2	 MODULE 3	 MODULE 4	 MODULE 5
Describes the basic concepts of return and reintegration and explains IOM's integrated approach to reintegration. It also lays out general considerations when developing a comprehensive reintegration programme, including assessments, staffing and budgeting.	Reintegration assistance at the individual level, outlines suggested steps for assisting returnees, taking into account the economic, social and psychosocial dimensions of reintegration.	Reintegration assistance at the community level, provides guidance on assessing community needs and engaging the community in reintegration activities. It also provides examples of community-level reintegration initiatives in the economic, social and psychosocial dimensions.	Reintegration assistance at the structural level, proposes ways to strengthen capacities of all actors and to promote stakeholder engagement and ownership in reintegration programming. It suggests approaches for mainstreaming reintegration into existing policies and strategies.	Monitoring and evaluation of reintegration assistance, provides guidance and tools to design programmes, monitor interventions and carry out evaluations to maximize effectiveness and learning.

AN INTEGRATED APPROACH TO REINTEGRATION



WHAT IS THE REINTEGRATION HANDBOOK BASED ON?

IOM'S Integrated Approach to Reintegration is the basis for the Reintegration Handbook. It asserts that: "reintegration can be considered sustainable when returnees have reached levels of economic self-sufficiency, social stability within their communities, and psychosocial well-being that allow them to cope with (re)migration drivers. Having achieved sustainable reintegration, returnees are able to make further migration decisions a matter of choice, rather than necessity".

To achieve this objective, it is necessary to approach migrant reintegration in a comprehensive manner, considering the factors that can affect reintegration and addressing them in a way to respond to the needs of the individual returnees as well as the communities to which they return in a mutually beneficial way, and address the structural factors at play.

Key Considerations of the Reintegration Handbook

Reintegration assistance should be:

