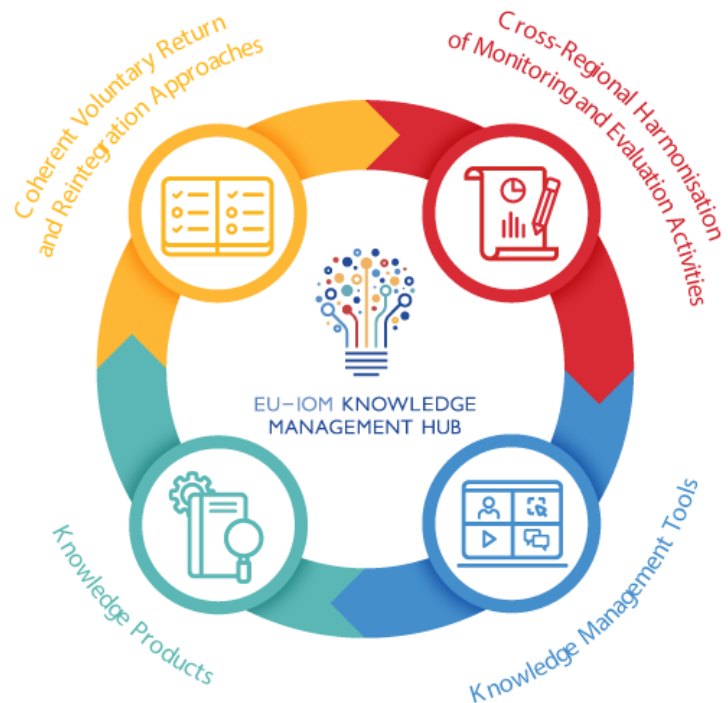


The **EU-IOM Knowledge Management Hub (KMH)** was established in September 2017 under the European Union funded Pilot Action on Voluntary Return and Sustainable, Community-Based Reintegration. It aims at supporting the implementation of the EU-IOM Actions¹ in support of migrant protection and reintegration by strengthening information sharing and harmonization of approaches, processes and tools relating to return and reintegration, and by centralizing and disseminating the knowledge gained from these programmes and beyond.

The KMH's activities revolve around four inter-connected components:



Scan the QR code and share this leaflet

¹ In line with the EU external policy and migration priorities, IOM and the EU have jointly developed the following programmes focusing on migrant protection, dignified voluntary return and sustainable reintegration: Joint Initiative in Sahel and Lake Chad, North Africa and Horn of Africa; Pilot Action on Voluntary Return and Sustainable, Community-Based Reintegration; Improving Reintegration of Returnees in Afghanistan (RADA) and Sustainable Reintegration and Improved Migration Governance (Prottasha).

The four components of the KMH:



Ensuring coherent methodological approaches

Standardization of approaches and practices, including through capacity-building, to ensure coherence among programmes and adherence to IOM global guidelines, as well as to avoid fragmentation of approaches and practices and improve opportunities for collaboration.



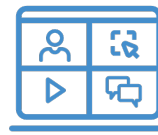
Harmonising monitoring and evaluation activities

Support of the harmonization of cross-regional monitoring and evaluation activities among the EU-IOM Actions to ensure availability of reliable data allowing for comparative analysis across regions, particularly in the field of reintegration sustainability, feeding into evidence-based programming.



Setting up knowledge management tools

Set-up of knowledge management tools such as webinars, cross-regional knowledge sharing workshops, and a multi-faceted Return and Reintegration Platform with a variety of tools to share, learn, and discuss research and best practices, including a Community of practice and more than 600 resources.



Producing knowledge products

Generation of knowledge products to address knowledge gaps and enhance evidence-based programming: these include a Research Fund and a series of Knowledge Papers as well as Good Practices factsheets detailing reintegration initiatives that can be replicated or adapted elsewhere.